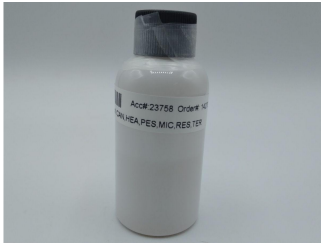


Tejas Hemp, LLC.
 1516 S Lamar Blvd. #102
 Austin, TX 78704
 lab@tejashemp.com
 512-592-0846

Sample: 08-25-2022-23758
 Sample Received: 08/25/2022;
 Report Created: 08/31/2022; Expires: 08/31/2023

CH18TEJH-TV-150GvCH10
 Ingestible, Tincture



0.283%
 Total THC

0.283%
 Δ-9 THC

4.554 %
 Total Cannabinoids

1.860 %
 Total CBD

Cannabinoids

Complete

(Testing Method: HPLC, CON-P-3000)
 Date Tested: 08/25/2022

Analyte	LOD	LOQ	Mass	Mass	
	%	%	%	mg/g	
Δ-8-Tetrahydrocannabinol (Δ-8 THC)	0.0090	0.0135	ND	ND	
Δ-9-Tetrahydrocannabinol (Δ-9 THC)	0.0090	0.0135	0.283	2.827	<div style="width: 2.827%;"></div>
Δ-9-Tetrahydrocannabinolic Acid (THCA-A)	0.0090	0.0135	ND	ND	
Δ-9-Tetrahydrocannabinophorol (Δ-9-THCP)	0.0090	0.0135	ND	ND	
Δ-9-Tetrahydrocannabivarin (Δ-9-THCV)	0.0090	0.0135	0.610	6.101	<div style="width: 6.101%;"></div>
Δ-9-Tetrahydrocannabivarinic Acid (Δ-9-THCVA)	0.0090	0.0135	ND	ND	
R-Δ-10-Tetrahydrocannabinol (R-Δ-10-THC)	0.0090	0.0135	ND	ND	
S-Δ-10-Tetrahydrocannabinol (S-Δ-10-THC)	0.0090	0.0135	ND	ND	
9R-Hexahydrocannabinol (9R-HHC)	0.0090	0.0135	ND	ND	
9S-Hexahydrocannabinol (9S-HHC)	0.0090	0.0135	ND	ND	
Tetrahydrocannabinol Acetate (THCO)	0.0090	0.0135	ND	ND	
Cannabidivarin (CBDV)	0.0090	0.0135	1.718	17.184	<div style="width: 17.184%;"></div>
Cannabidivarinic Acid (CBDVA)	0.0090	0.0135	ND	ND	
Cannabidiol (CBD)	0.0090	0.0135	1.860	18.602	<div style="width: 18.602%;"></div>
Cannabidiolic Acid (CBDA)	0.0090	0.0135	ND	ND	
Cannabigerol (CBG)	0.0090	0.0135	0.082	0.825	<div style="width: 0.825%;"></div>
Cannabigerolic Acid (CBGA)	0.0090	0.0135	ND	ND	
Cannabinol (CBN)	0.0090	0.0135	<LOQ	<LOQ	
Cannabinolic Acid (CBNA)	0.0090	0.0135	ND	ND	
Cannabichromene (CBC)	0.0065	0.0135	<LOQ	<LOQ	
Cannabichromenic Acid (CBCA)	0.0090	0.0135	ND	ND	
Total			4.554	45.539	

Total THC = THCa * 0.877 + Δ9-THC; Total CBD = CBDa * 0.877 + CBD; LOQ = Limit of Quantitation; ND = Not Detected.

Total THC Measurement of Uncertainty: ± 0.040%
 Total CBD Measurement of Uncertainty: ± 2.000%
 THCO potency analysis does not designate quantitative specificity of Δ-8-THCO and Δ-9-THCO isomers



New Bloom Labs
 6121 Heritage Park Drive, A500
 Chattanooga, TN 37416
 (844) 837-8223
 TN DEA#: RN0563975

Natalie Siracusa
 Natalie Siracusa
 Laboratory Director

New Bloom Labs
 10606 Shady Trail, 105
 Dallas, TX 75520
 (844) 837-8223
 TX DEA#: RN0594653

Powered by
 reLIMS
 info@relims.com

Tejas Hemp, LLC.
 1516 S Lamar Blvd. #102
 Austin, TX 78704
 lab@tejashemp.com
 512-592-0846

Sample: 08-25-2022-23758
 Sample Received: 08/25/2022;
 Report Created: 08/31/2022; Expires: 08/31/2023

CH18TEJH-TV-150GvCH10
 Ingestible, Tincture



Terpenes

(Testing Method: HS-GC/MS, CON-P-4000)

Date Tested: 08/25/2022

Analyte	LOD	LOQ	Mass	Mass	
	PPM	PPM	PPM	mg/g	
α-Bisabolol	0.750	3.000	8.695	0.009	
α-Humulene	0.750	3.000	69.637	0.070	
α-Pinene	0.750	3.000	23.657	0.024	
α-Terpinene	0.750	3.000	ND	ND	
1,8-Cineole	0.750	3.000	12.501	0.013	
β-Caryophyllene	0.750	3.000	263.158	0.263	
β-Myrcene	0.750	3.000	204.682	0.205	
Borneol	0.750	3.000	4.314	0.004	
Camphene	0.750	3.000	5.839	0.006	
Carene	0.750	3.000	ND	ND	
Caryophyllene Oxide	0.750	3.000	11.760	0.012	
Citral	0.750	3.000	ND	ND	
Dihydrocarveol	0.750	3.000	ND	ND	
Fenchone	0.750	3.000	<LOQ	<LOQ	
γ-Terpinene	0.750	3.000	<LOQ	<LOQ	
Limonene	0.750	3.000	277.545	0.278	
Linalool	0.750	3.000	129.545	0.130	
Menthol	0.750	3.000	ND	ND	
Nerolidol	0.750	3.000	ND	ND	
Ocimene	0.750	3.000	ND	ND	
Pulegone	0.750	3.000	ND	ND	
Terpinolene	0.750	3.000	<LOQ	<LOQ	
Total			1011.333	1.011	0.101 %

Primary Aromas

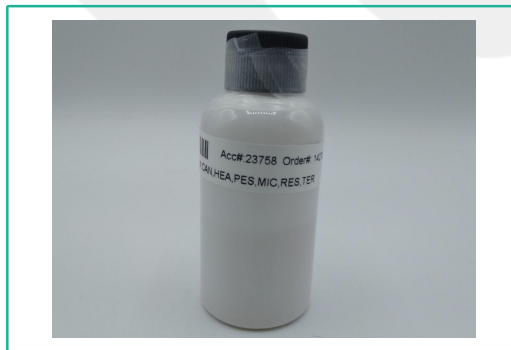
Lime

Cinnamon

Clove

Lavender

Hops

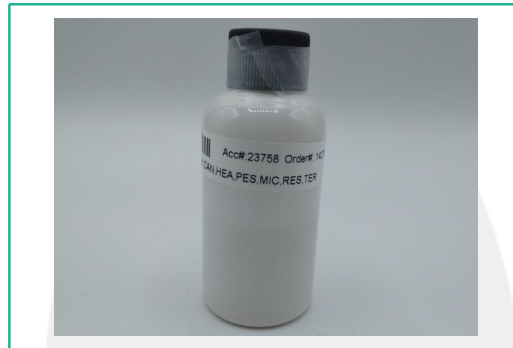


Total terpenes value is qualitative and includes concentrations outside the assay quantitative analytical range.

Tejas Hemp, LLC.
 1516 S Lamar Blvd. #102
 Austin, TX 78704
 lab@tejashemp.com
 512-592-0846

Sample: 08-25-2022-23758
 Sample Received: 08/25/2022;
 Report Created: 08/31/2022; Expires: 08/31/2023

CH18TEJH-TV-150GvCH10
 Ingestible, Tincture



Heavy Metals

(Method of Analysis: ICP/MS, CON-P-7000)

Date Tested: 08/26/2022

Analyte	LOQ	Mass
	PPM	PPM
Arsenic	0.0980	<0.0980
Cadmium	0.0980	<0.0980
Chromium	0.2451	<0.2451
Lead	0.0980	<0.0980
Mercury	0.0980	<0.0980
Palladium	0.2451	<0.2451
Selenium	0.0980	<0.0980



New Bloom Labs
 6121 Heritage Park Drive, A500
 Chattanooga, TN 37416
 (844) 837-8223
 TN DEA#: RN0563975

Natalie Siracusa
 Natalie Siracusa
 Laboratory Director

New Bloom Labs
 10606 Shady Trail, 105
 Dallas, TX 75520
 (844) 837-8223
 TX DEA#: RN0594653

Powered by
 reLIMS
 info@relims.com

Tejas Hemp, LLC.
 1516 S Lamar Blvd. #102
 Austin, TX 78704
 lab@tejashemp.com
 512-592-0846

Sample: 08-25-2022-23758
 Sample Received: 08/25/2022;
 Report Created: 08/31/2022; Expires: 08/31/2023


CH18TEJH-TV-150GvCH10
 Ingestible, Tincture



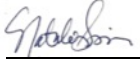
Pesticides

(Testing Method: LC/MS/MS, CON-P-5000)
 Date Tested: 08/25/2022

Analyte	LOQ	Mass	Analyte	LOQ	Mass
	PPM	PPM		PPM	PPM
Acephate	0.100	<0.100	Hexythiazox	0.100	<0.100
Acequinocyl	0.100	<0.100	Imazalil	0.100	<0.100
Acetamiprid	0.100	<0.100	Imidacloprid	0.200	<0.200
Aldicarb	0.100	<0.100	Kresoxim Methyl	0.100	<0.100
Avermectin B1A	0.100	<0.100	Malathion	0.100	<0.100
Avermectin B1B	0.100	<0.100	Metalaxyl	0.100	<0.100
Azoxystrobin	0.100	<0.100	Methiocarb	0.100	<0.100
Bifenazate	0.100	<0.100	Methomyl	0.100	<0.100
Bifenthrin	0.100	<0.100	Mevinphos	0.100	<0.100
Boscalid	0.100	<0.100	MGK-264	0.100	<0.100
Captan	0.700	<0.700	Myclobutanil	0.100	<0.100
Carbaryl	0.100	<0.100	Naled	0.250	<0.250
Carbofuran	0.100	<0.100	Oxamyl	0.500	<0.500
Chlorantraniliprole	0.100	<0.100	Paclobutrazole	0.100	<0.100
Chlorfenapyr	0.100	<0.100	Parathion Methyl	0.100	<0.100
Chlormequat	0.100	<0.100	Pentachloronitrobenzene	0.150	<0.150
Chlorpyrifos	0.100	<0.100	Permethrins	0.100	<0.100
Clofentazine	0.100	<0.100	Phosmet	0.100	<0.100
Coumaphos	0.100	<0.100	Piperonyl Butoxide	1.000	<1.000
Cyfluthrin	0.500	<0.500	Prallethrin	0.100	<0.100
Cypermethrin	0.500	<0.500	Propiconazole	0.100	<0.100
Daminozide	0.100	<0.100	Propoxur	0.100	<0.100
Diazinon	0.100	<0.100	Pyrethrins	0.500	<0.500
Dichlorvos (DDPV)	0.050	<0.050	Pyridaben	0.100	<0.100
Dimethoate	0.100	<0.100	Spinetoram	0.100	<0.100
Dimethomorph	0.100	<0.100	Spinosad A	0.050	<0.050
Ethoprophos	0.100	<0.100	Spinosad D	0.050	<0.050
Etofenprox	0.100	<0.100	Spiromesifen	0.100	<0.100
Etoxazole	0.100	<0.100	Spirotetramat	0.100	<0.100
Fenhexamid	0.100	<0.100	Spiroxamine	0.100	<0.100
Fenoxycarb	0.100	<0.100	Tebuconazole	0.100	<0.100
Fenpyroximate	0.100	<0.100	Thiacloprid	0.100	<0.100
Fipronil	0.100	<0.100	Thiamethoxam	0.100	<0.100
Flonicamid	0.100	<0.100	Trifloxystrobin	0.100	<0.100
Fludioxonil	0.100	<0.100	Chlordane	0.100	Not Detected



New Bloom Labs
 6121 Heritage Park Drive, A500
 Chattanooga, TN 37416
 (844) 837-8223
 TN DEA#: RN0563975



Natalie Siracusa
 Laboratory Director

New Bloom Labs
 10606 Shady Trail, 105
 Dallas, TX 75520
 (844) 837-8223
 TX DEA#: RN0594653

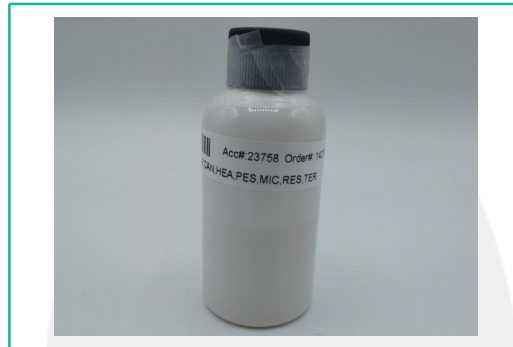
Powered by
 reLIMS
 info@relims.com

All analyses were conducted at 6121 Heritage Park Dr, Suite A500 Chattanooga, TN 37416. Results published on this certificate relate only to the items tested. Items are tested as received. New Bloom Labs makes no claims as to the efficacy, safety, or other risks associated with any detected or non-detected level of any compounds reported herein. This Certificate shall not be reproduced except in full, without the written approval of New Bloom Labs.

Tejas Hemp, LLC.
 1516 S Lamar Blvd. #102
 Austin, TX 78704
 lab@tejashemp.com
 512-592-0846

Sample: 08-25-2022-23758
 Sample Received: 08/25/2022;
 Report Created: 08/31/2022; Expires: 08/31/2023

CH18TEJH-TV-150GvCH10
 Ingestible, Tincture



Microbials

(Testing Method: qPCR & 3M Petrifilm & SIM Plate, CON-P-6000, CON-P-9000)
 Date Tested: 08/26/2022

Analyte	LOQ	Units
	CFU/g	CFU/g
Total Yeast and Mold Count	17	<17
Total Aerobic Bacteria Count	7	<7
Total Coliform Count	7	<7
Total Enterobacteriaceae/BTGN Count	7	<7
Aspergillus spp.		Not Detected
Shigatoxigenic Escherichia coli (STEC)		Not Detected
Salmonella		Not Detected
Listeria monocytogenes		Not Detected



New Bloom Labs
 6121 Heritage Park Drive, A500
 Chattanooga, TN 37416
 (844) 837-8223
 TN DEA#: RN0563975

Natalie Siracusa
Natalie Siracusa
 Laboratory Director

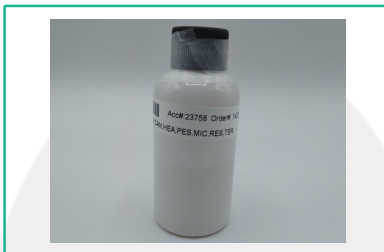
New Bloom Labs
 10606 Shady Trail, 105
 Dallas, TX 75520
 (844) 837-8223
 TX DEA#: RN0594653

Powered by
 reLIMS
 info@relims.com

Tejas Hemp, LLC.
1516 S Lamar Blvd. #102
Austin, TX 78704
lab@tejashemp.com
512-592-0846

Sample: 08-25-2022-23758
Sample Received: 08/25/2022;
Report Created: 08/31/2022; Expires: 08/31/2023

CH18TEJH-TV-150GvCH10
Ingestible, Tincture



Residual Solvents

(Testing Method: HS-GC/MS, CON-P-8000)

Date Tested: 08/25/2022

Analyte	LOQ	Mass	Analyte	LOQ	Mass
	PPM	PPM		PPM	PPM
1, 2 Dichloroethane	2.000	<2.000	Ethanol	1000.000	<1000.000
1,1 Dichloroethene	2.000	<2.000	Ethyl Acetate	250.000	<250.000
1, 2 Dimethoxyethane	20.000	<20.000	Ethyl Ether	250.000	<250.000
1, 4 Dioxane	100.000	<100.000	Ethylbenzene	100.000	<100.000
1,1,1 Trichloroethane	20.000	<20.000	Ethylene Oxide	5.000	<5.000
1,1,2 Trichloroethane	20.000	<20.000	Hexane	100.000	<100.000
1,2,3,4 Tetrahydronaphthalene	20.000	<20.000	Isobutanol	1000.000	<1000.000
2 Ethoxyethanol	20.000	<20.000	Methanol	100.000	<100.000
2 Hexanone	20.000	<20.000	n-Heptane	1000.000	<1000.000
2 Propanol	500.000	<500.000	n-Pentane	100.000	<100.000
Acetone	250.000	<250.000	n-Propanol	1000.000	<1000.000
Acetonitrile	20.000	<20.000	Nitromethane	10.000	<10.000
Benzene	1.000	<1.000	o-Xylene, m-Xylene, p-Xylene	100.000	<100.000
Butane	1000.000	<1000.000	Propane	1000.000	<1000.000
Chlorobenzene	100.000	<100.000	Pyridine	100.000	<100.000
Chloroform	2.000	<2.000	tert-Butanol	1000.000	<1000.000
cis 1,2 Dichloroethene	100.000	<100.000	Tetrahydrofuran	100.000	<100.000
Diacetyl	100.000	<100.000	Toluene	100.000	<100.000
Dichloromethane	100.000	<100.000	trans 1, 2 Dichloroethene	100.000	<100.000
Dimethyl Sulfoxide (DMSO)	100.000	<100.000	Trichloroethene	20.000	<20.000