



Customer: Cali Sober Inc

Address: 5535 McCommas Blvd
Dallas, TX 75206

Sample ID: Cali Sober - Ranch Water

Matrix: Edible

Labnumber: 23K0074-01

Total mass or volume per unit (g or mL): 354.882

Density (g/mL): 1.0493

Cannabinoid Profile

Test Conditions: 21°C

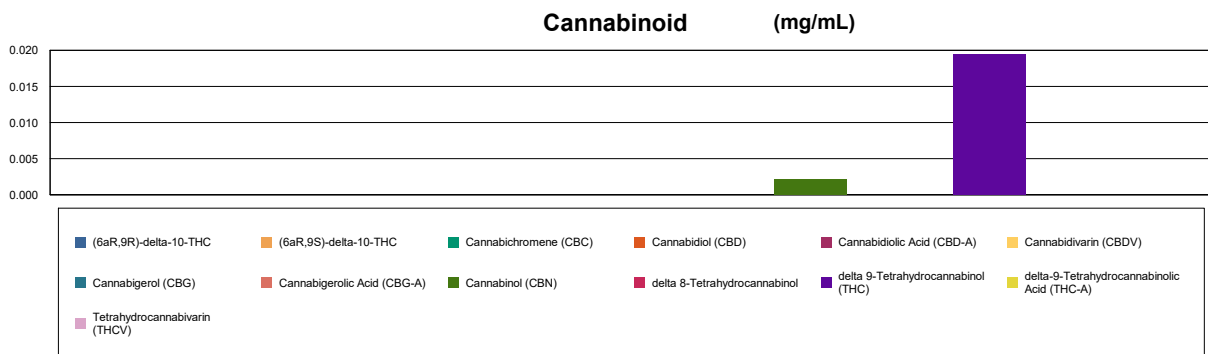
Extraction Technician: SH

Analytical Chemist: SH

Extraction Date(s)	Analysis Date(s)
11/16/2023	11/15/2023

Test Method: Cannabinoid Potency by HPLC		Results		
	LOD (mg/mL)	%	mg/mL	mg/Can
Cannabidivarin (CBDV)	<0.001			
Cannabidiolic Acid (CBD-A)	<0.001			
Cannabigerolic Acid (CBG-A)	<0.001			
Cannabigerol (CBG)	<0.001			
Cannabidiol (CBD)	<0.001			
Tetrahydrocannabivarin (THCV)	<0.001			
Cannabinol (CBN)		0.0002	0.00211	0.748
Cannabichromene (CBC)	<0.001			
delta 9-Tetrahydrocannabinol (THC)		0.002	0.020	6.93
delta-9-Tetrahydrocannabinolic Acid (THC-A)	<0.002			
delta 8-Tetrahydrocannabinol	<0.002			
(6aR,9S)-delta-10-THC	<0.002			
(6aR,9R)-delta-10-THC	<0.002			
Cannabinoids Total		%	mg/mL	
Max Active THC (delta-9-tetrahydrocannabinol)		0.00	0.02	
Max Active CBD		<0.0001	<0.001	
Total Cannabinoids		0.00	0.02	

Following USDA guidelines on uncertainty, Altitude Consulting's uncertainty is calculated to be +/- 5% for all cannabinoids using a coverage factor of 2 (95% confidence interval). Measurement uncertainty has not been factored into reported values. Blank results indicate the compound was below the limit of detection.



Gary Brook - Laboratory Director - 11/16/2023

Reporting Limits will vary based on sample extraction weight used for the analysis.

The results of this report are based solely on the sample submitted and cannot be reproduced. Decision Rule: Measurement uncertainty is not accounted for in the reported values. Results are based solely on calculated numbers. Altitude Consulting makes no Statements of conformity. **Pesticide, metal, and microbial analyses are subcontracted to ISO 17025 laboratories.**



Customer: Cali Sober Inc

Address: 5535 McCommas Blvd
Dallas, TX 75206

Sample ID: Cali Sober - Berry Ginger Fizz

Matrix: Edible

Labnumber: 23K0074-02 **Total mass or volume per unit (g or mL):** 354.882

Density (g/mL): 1.0493

Cannabinoid Profile

Test Conditions: 21°C

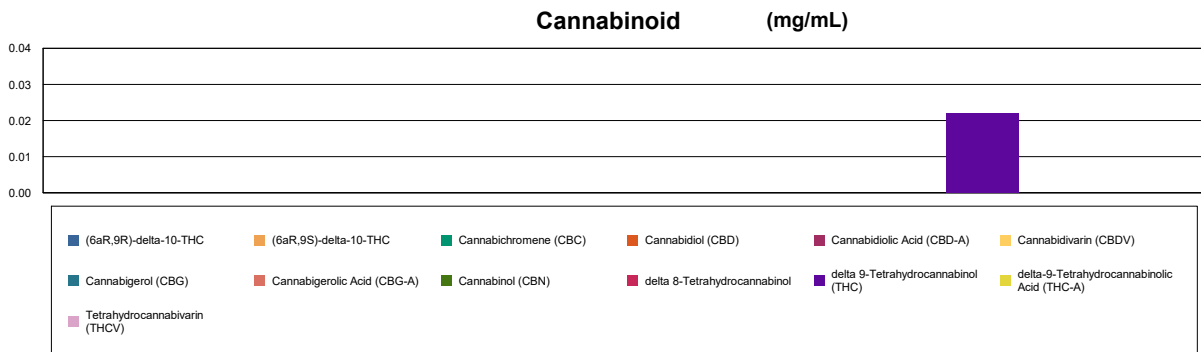
Extraction Technician: SH

Analytical Chemist: SH

Extraction Date(s)	Analysis Date(s)
11/16/2023	11/15/2023

Test Method: Cannabinoid Potency by HPLC		Results		
	LOD (mg/mL)	%	mg/mL	mg/Can
Cannabidivarin (CBDV)	<0.001			
Cannabidiolic Acid (CBD-A)	<0.001			
Cannabigerolic Acid (CBG-A)	<0.001			
Cannabigerol (CBG)	<0.001			
Cannabidiol (CBD)	<0.001			
Tetrahydrocannabivarin (THCV)	<0.001			
Cannabinol (CBN)	<0.001			
Cannabichromene (CBC)	<0.001			
delta 9-Tetrahydrocannabinol (THC)		0.002	0.022	7.83
delta-9-Tetrahydrocannabinolic Acid (THC-A)	<0.002			
delta 8-Tetrahydrocannabinol	<0.002			
(6aR,9S)-delta-10-THC	<0.002			
(6aR,9R)-delta-10-THC	<0.002			
Cannabinoids Total		%	mg/mL	
Max Active THC (delta-9-tetrahydrocannabinol)		0.00	0.02	
Max Active CBD		<0.0001	<0.001	
Total Cannabinoids		0.00	0.02	

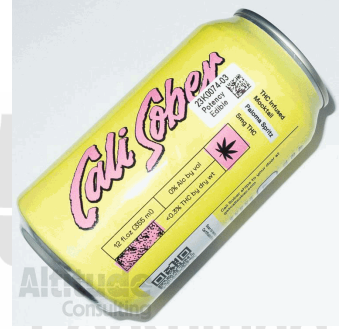
Following USDA guidelines on uncertainty, Altitude Consulting's uncertainty is calculated to be +/- 5% for all cannabinoids using a coverage factor of 2 (95% confidence interval). Measurement uncertainty has not been factored into reported values. Blank results indicate the compound was below the limit of detection.



Gary Brook - Laboratory Director - 11/16/2023

Reporting Limits will vary based on sample extraction weight used for the analysis.

The results of this report are based solely on the sample submitted and cannot be reproduced. Decision Rule: Measurement uncertainty is not accounted for in the reported values. Results are based solely on calculated numbers. Altitude Consulting makes no Statements of conformity. **Pesticide, metal, and microbial analyses are subcontracted to ISO 17025 laboratories.**



Customer: Cali Sober Inc
Address: 5535 McCommas Blvd
Dallas, TX 75206
Sample ID: Cali Sober - Paloma Spritz
Matrix: Edible
Labnumber: 23K0074-03 **Total mass or volume per unit (g or mL):** 354.882 **Density (g/mL):** 1.0493

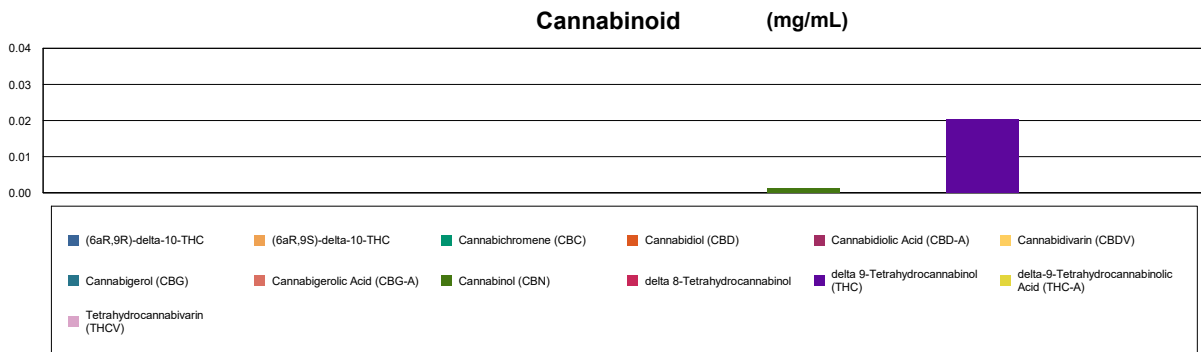
Cannabinoid Profile

Test Conditions: 21°C
Extraction Technician: SH
Analytical Chemist: SH

Extraction Date(s)	Analysis Date(s)
11/16/2023	11/15/2023

Test Method: Cannabinoid Potency by HPLC		Results		
	LOD (mg/mL)	%	mg/mL	mg/Can
Cannabidivarin (CBDV)	<0.001			
Cannabidiolic Acid (CBD-A)	<0.001			
Cannabigerolic Acid (CBG-A)	<0.001			
Cannabigerol (CBG)	<0.001			
Cannabidiol (CBD)	<0.001			
Tetrahydrocannabivarin (THCV)	<0.001			
Cannabinol (CBN)		0.0001	0.00135	0.480
Cannabichromene (CBC)	<0.001			
delta 9-Tetrahydrocannabinol (THC)		0.002	0.021	7.26
delta-9-Tetrahydrocannabinolic Acid (THC-A)	<0.002			
delta 8-Tetrahydrocannabinol	<0.002			
(6aR,9S)-delta-10-THC	<0.002			
(6aR,9R)-delta-10-THC	<0.002			
Cannabinoids Total		%	mg/mL	
Max Active THC (delta-9-tetrahydrocannabinol)		0.00	0.02	
Max Active CBD		<0.0001	<0.001	
Total Cannabinoids		0.00	0.02	

Following USDA guidelines on uncertainty, Altitude Consulting's uncertainty is calculated to be +/- 5% for all cannabinoids using a coverage factor of 2 (95% confidence interval). Measurement uncertainty has not been factored into reported values. Blank results indicate the compound was below the limit of detection.



END OF REPORT

END OF REPORT

Gary Brook - Laboratory Director - 11/16/2023

Reporting Limits will vary based on sample extraction weight used for the analysis.

The results of this report are based solely on the sample submitted and cannot be reproduced. Decision Rule: Measurement uncertainty is not accounted for in the reported values.

Results are based solely on calculated numbers. Altitude Consulting makes no Statements of conformity. **Pesticide, metal, and microbial analyses are subcontracted to ISO**

17025 laboratories.