



Customer: Cali Sober Inc
Address: 5535 McCommas Blvd
Dallas, TX 75206

Sample ID: Ginger Berry

Matrix: Edible

Labnumber: 23D0085-01 **Total mass or volume per unit (g or mL):** 340.19

Density (g/mL): 1.0112

Cannabinoid Profile

Test Conditions: 17°C

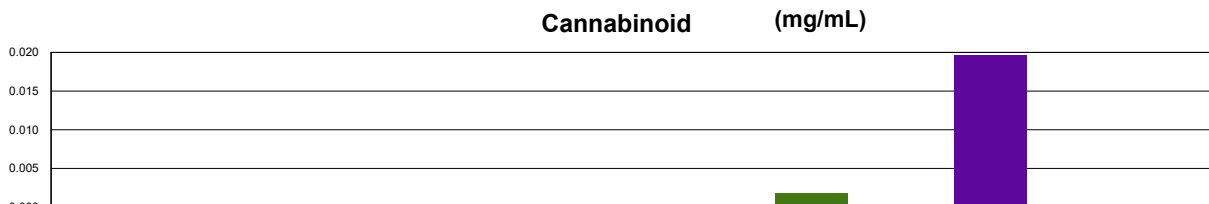
Extraction Technician: SH

Analytical Chemist: SH

Extraction Date(s)	Analysis Date(s)
4/17/2023	4/17/2023

Cannabinoids (HPLC)	Results			
	LOD (mg/mL)	%	mg/mL	mg/Can
Cannabidivarin (CBDV)	<0.002			
Cannabidiolic Acid (CBD-A)	<0.002			
Cannabigerolic Acid (CBG-A)	<0.002			
Cannabigerol (CBG)	<0.002			
Cannabidiol (CBD)	<0.002			
Tetrahydrocannabivarin (THCV)	<0.002			
Cannabinol (CBN)		0.0002	0.00184	0.627
Cannabichromene (CBC)	<0.002			
delta 9-Tetrahydrocannabinol (THC)		0.002	0.020	6.69
delta-9-Tetrahydrocannabinolic Acid (THC-A)	<0.004			
delta 8-Tetrahydrocannabinol	<0.004			
(6aR,9S)-delta-10-THC	<0.004			
(6aR,9R)-delta-10-THC	<0.004			
Cannabinoids Total		%	mg/mL	
Max Active THC (delta-9-tetrahydrocannabinol)		0.00	0.02	
Max Active CBD		<0.0002	<0.002	
Total Cannabinoids		0.00	0.02	

Following USDA guidelines on uncertainty, Altitude Consulting's uncertainty is calculated to be +/- 3% for all cannabinoids using a coverage factor of 2 (95% confidence interval). Measurement uncertainty has not been factored into reported values.
Blank results indicate the compound was below the limit of detection.



(6aR,9R)-delta-10-THC	(6aR,9S)-delta-10-THC	Cannabichromene (CBC)	Cannabidiol (CBD)	Cannabidiolic Acid (CBD-A)	Cannabidivarin (CBDV)
Cannabigerol (CBG)	Cannabigerolic Acid (CBG-A)	Cannabinol (CBN)	delta 8-Tetrahydrocannabinol	delta 9-Tetrahydrocannabinol (THC)	delta 9-Tetrahydrocannabinolic Acid (THC-A)
Tetrahydrocannabivarin (THCV)					

Gary Brook - Laboratory Director - 4/18/2023

Reporting Limits will vary based on sample extraction weight used for the analysis.

The results of this report are based solely on the sample submitted and cannot be reproduced. Decision Rule: Measurement uncertainty is not accounted for in the reported values.

Results are based solely on calculated numbers. Altitude Consulting makes no Statements of conformity. **Pesticide, metal, and microbial analyses are subcontracted to ISO 17025 laboratories.**